

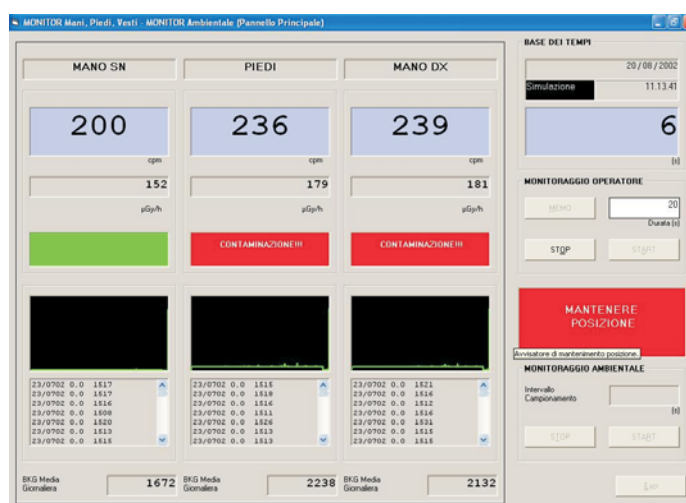
Gamma MEP - Hands & Feet Monitor



Gamma/Mep: Hands and Feet Monitor

Measuring device equipped with large surface detectors, for automatic determination of radioactive contamination by gamma-emitting nuclides on limbs and clothes. Gamma/MEP consists of three large surface detectors ($20 \times 12 \text{ cm}^2$), two for the feet and one for each hand. The detectors dedicated to hands are removable for the measure of the contamination over the whole body. Gamma/MEP is supplied with PC and software for data organisation and storage.

Gamma/MEP is suitable for the detection of radioactive contamination on limbs and clothes. It consists of 4 large surface detectors, 2 for each hand and 2 for the feet. The detectors placed in the arms position are removable and can be also used to check any area of the body for radioactive contamination. The on-board electronics is connected to a PC, graphical output of the results is included in the software. Three adjustable alarm thresholds are available, separately for each area of measurement.



Software WMEP: in the picture, one of the graphics windows of the program.

TECHNICAL SPECIFICATIONS

- Type of device: three-channel digital monitor (hands, feet, clothes);
- Detectors: n° 4 large surface detectors;
- Field of measurement: 1 ÷ 9999 counts /cycle;
- High Voltage: n° 1 Module, adjustable 500 ÷ 1000 V
- Software: WMEP - acquisition, storage and data printout;
- Filter: automatic Background subtraction, adjustable via software;
- Elettrical specifications: supply ~ 220 V 50 Hz, 40 watt.

l'acn – L'accessorio nucleare S.r.l.
 20023 Cerro Maggiore MI – via 25 Aprile 9/13
 tel. 0331 420303 – fax. 0331 420153, www.acn.it, acn@acn.it